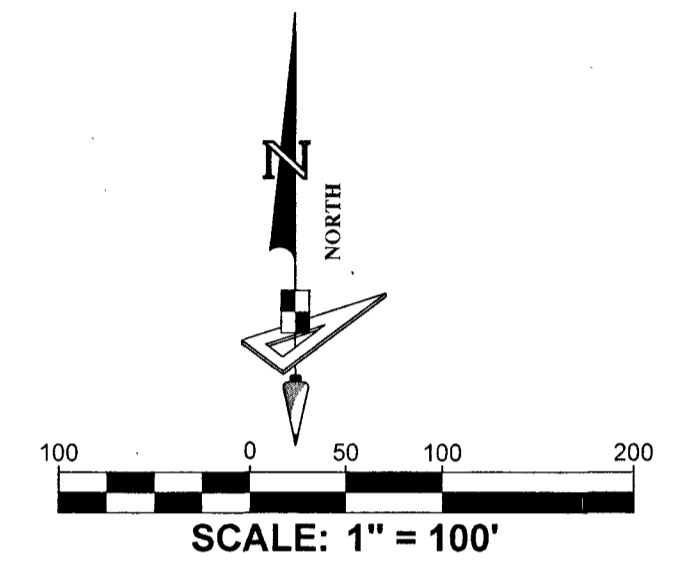
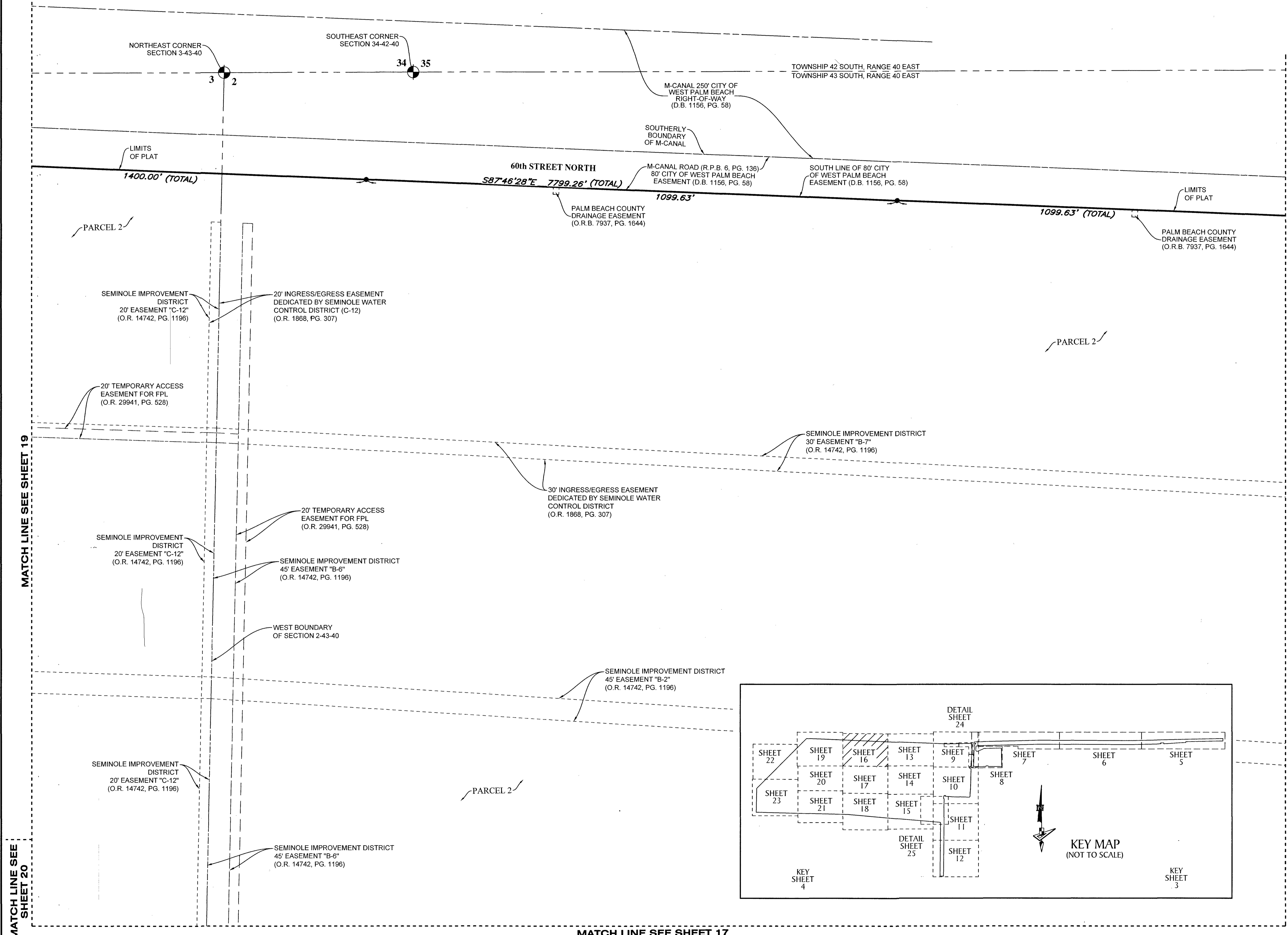


64

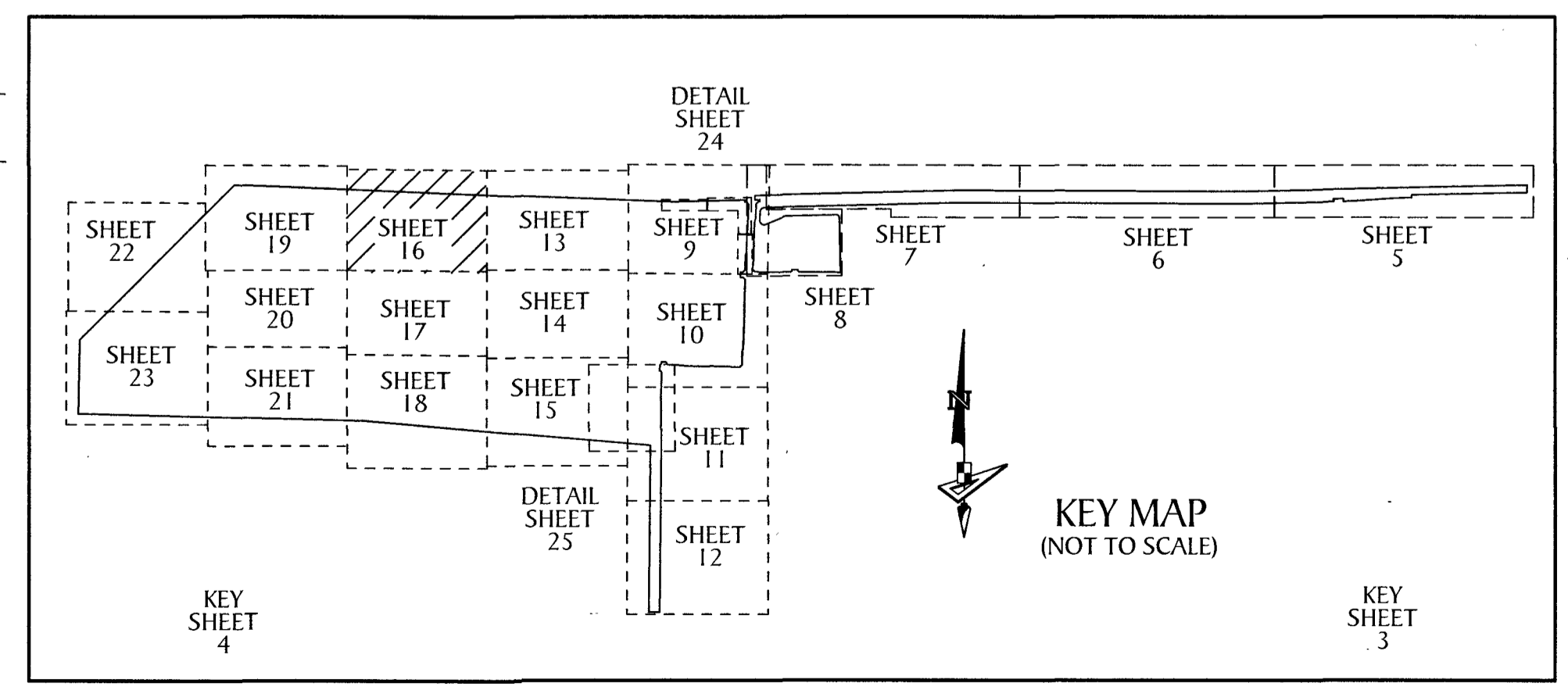
WESTLAKE WEST

A SUBDIVISION IN SECTIONS 1, 2, 3 AND 12, TOWNSHIP 43 SOUTH, RANGE 40 EAST, AND SECTIONS 5 AND 6, TOWNSHIP 43 SOUTH, RANGE 41 EAST, CITY OF WESTLAKE, PALM BEACH COUNTY, FLORIDA, BEING, IN PART, A REPLAT OF THE FOLLOWING: A PORTION OF TRACT O.S.T. #1 AND ALL OF TRACT O.S.T. #2, "PERSIMMON BOULEVARD WEST - PLAT 2", PLAT BOOK 134, PAGES 164 THROUGH 166, INCLUSIVE, AND, A PORTION OF TOWN CENTER PARKWAY, "FPL WESTLAKE SOLAR ENERGY CENTER", PLAT BOOK 126, PAGES 24 AND 25, PUBLIC RECORDS OF PALM BEACH COUNTY, FLORIDA.



LEGEND

- P.O.B. ----- POINT OF BEGINNING
- P.O.C. ----- POINT OF COMMENCEMENT
- P.B. ----- PLAT BOOK
- D.B. ----- DEED BOOK
- R.P.B. ----- ROAD PLAT BOOK
- O.R./O.R.B. ----- OFFICIAL RECORDS BOOK
- PG./PG(S) ----- PAGE(S)
- NAD ----- NORTH AMERICAN DATUM
- W.M.T. ----- WATER MANAGEMENT TRACT
- O.S.T. ----- OPEN SPACE TRACT
- P.B.C. ----- PALM BEACH COUNTY
- U.E. ----- UTILITY EASEMENT
- D.E. ----- DRAINAGE EASEMENT
- L.M.A.E. ----- LAKE MAINTENANCE ACCESS EASEMENT
- 5-43-41 ----- SECTION-TOWNSHIP-RANGE
- AC ± ----- ACRES PLUS OR MINUS
- R ----- RADIUS
- L ----- ARC LENGTH
- D ----- DELTA ANGLE
- CB ----- CHORD BEARING
- C ----- CHORD
- N.T.I. ----- NON-TANGENT INTERSECTION
- N.T.C. ----- NON-TANGENT CURVATURE
- P.C. ----- POINT OF CURVATURE
- P.T. ----- POINT OF TANGENCY
- P.C.C. ----- POINT OF COMPOUND CURVATURE
- P.R.C. ----- POINT OF REVERSE CURVATURE
- R.I. ----- RADIAL INTERSECTION
- FPL/FP & L ----- FLORIDA POWER AND LIGHT
- R/W ----- RIGHT-OF-WAY
- (R) ----- RADIAL
- (NR) ----- NON-RADIAL
- HOA ----- HOMEOWNERS ASSOCIATION
- S.I.D. ----- SEMINOLE IMPROVEMENT DISTRICT
- PRM ----- PERMANENT REFERENCE MONUMENT
- ----- PERMANENT CONTROL POINT
- ----- FOUND PERMANENT REFERENCE MONUMENT
- ----- SET 1/2" IRON ROD WITH PRM CAP STAMPED "PRM LB 7768"



MATCH LINE SEE SHEET 19

MATCH LINE SEE SHEET 13

MATCH LINE SEE SHEET 17

GeoPoint
Surveying, Inc.

4152 W. Blue Heron Blvd. Phone: (561) 444-2720
Suite 106 www.geopointsurvey.com
Riviera Beach, FL 33404 Licensed Business Number LB 7768

SHEET 16 OF 25 SHEETS